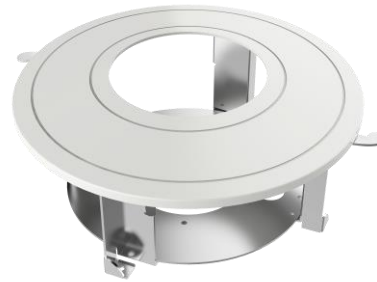


DS-1227ZJ-DM42

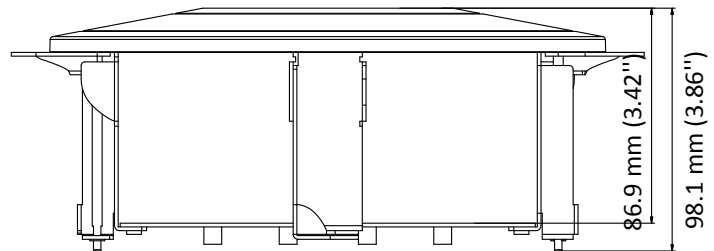
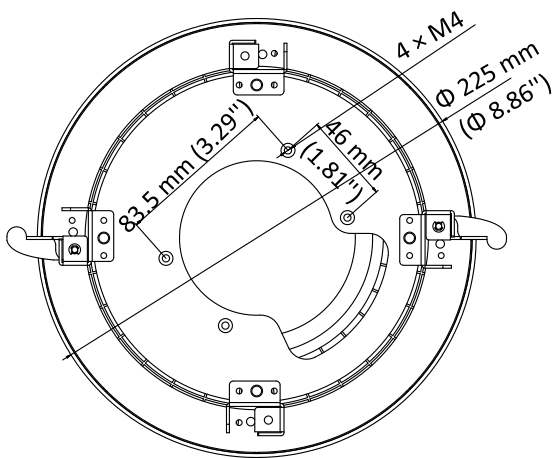
In-Ceiling Mount



Features

- Steel and plastic material with surface spray treatment
- Magnetic design facilitates dome camera installation
- In-ceiling mounting saves installation space

Dimension



Available Model

DS-1227ZJ-DM42

Parameter

Model	DS-1227ZJ-DM42
Parameters	In-Ceiling Mount
Appearance	Hikvision White
Material	Steel and Plastic
Dimension	Φ 225 mm × 98.1 mm (Φ 8.86" × 3.86")
Weight	710 g (1.57 lb.)

Notes

- The mount should be installed on the flat surface.
- Waterproof rubber is necessary for the outdoor application.
- The wall must be capable of supporting at least 3 times as much as the total weight of the camera, and the mount.
- The maximum load capacity of the in-ceiling mount is 4.5 kg (9.92 lb.).